



# **Welcome to 5th Grade!**



**2024-2025**

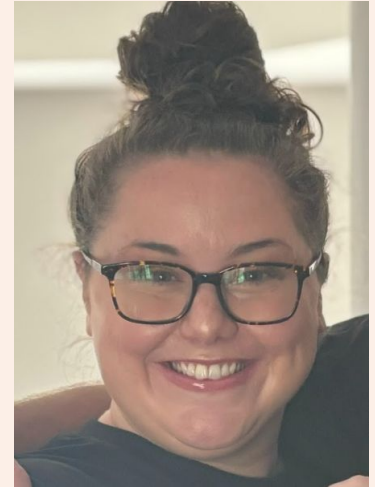
# Meet the Teachers!



MR. FOGLEMAN



MS. MASLOWE



MRS. ZALESKI



# + Meet the rest of the Team!



MRS.  
TEXEIRA  
SPECIAL  
EDUCATION



MS. HANCU  
SPECIAL  
EDUCATION



MRS.  
GRABEL  
ADVANCED  
ACADEMICS



MR.  
TAGGART  
ESOL

# Our Vision

BY PROVIDING AN  
INCLUSIVE LEARNING  
ENVIRONMENT, THAT  
EMBRACES THE  
CONTRIBUTIONS OF EACH  
CHILD, WE WILL CREATE A  
COMMUNITY OF  
EMPOWERED LIFE LONG  
LEARNERS AND CRITICAL  
THINKERS.





# ROAR



RESPECT

OWN YOUR ACTIONS

ADVOCATE

RESPONSIBLE



# Portrait of a Graduate



Communicator



Collaborator



Ethical and  
Global Citizen



Creative and  
Critical Thinker



Goal-Directed  
and Resilient  
Individual

A goal of FCPS is to provide opportunities for students to demonstrate learning in authentic ways and support students in the development of skills that employers are seeking for the workforce and are a necessity to be successful in the virtual learning environment and day-to-day life.

***Who do we want our students to be?***

**Communicators**

**Collaborators**

**Ethical & Global Citizens**

**Creative and Critical Thinkers**

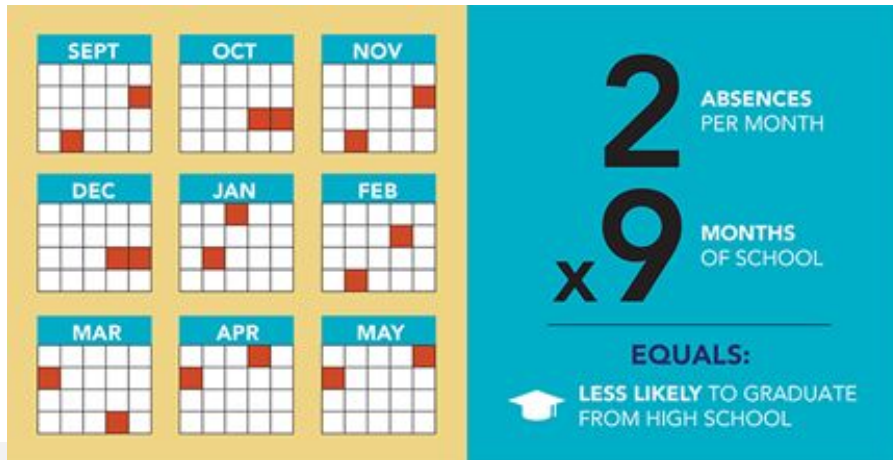
The background features a light peach color with white curved shapes at the top and bottom. Three plus signs are scattered: a light peach one at the top left, a white one at the top right, and a red one at the bottom left.

# Student Expectations

# Student Attendance

Attendance is taken at 8:50 each morning before students go to specials. The school day begins at 8:50 and ends at 3:35.

Please call the attendance line (703) 206-5331 if your child will be absent, tardy, or leaving early.



## Absences **ADD UP**

ELEMENTARY SCHOOL

MISSING

**18** DAYS IN A SCHOOL YEAR

or **2** DAYS EVERY MONTH

**EQUALS:**

- ↓ LOWER TEST SCORES
- 🔄 RETENTION IN LATER GRADES

\*used with permission of Attendance Works.



# When Students Are Sick

Protocols have been updated since the height of the pandemic. Students with a light cough, runny nose, or stomach ache **should** come to school. Students will no longer be sent home for these symptoms alone.



Send to school:

- Light cough, sneezing, runny nose
- Mild stomach ache
- Was sick but now fever-free for 24 hours



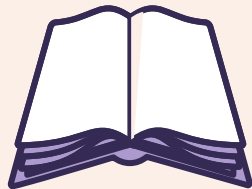
Keep at Home:

- Fever
- Vomiting or diarrhea
- Severe illness

# Our Daily Schedule



8:45-9:00	Arrival and Breakfast
9:00-10:00	Specials
10:00-12:15	Block 1
12:15-12:45	Recess
12:45-1:15	Lunch
1:15-3:30	Block 2
3:35	Dismissal



## 5th Grade Specials Schedule 9:00-10:00

Your child's specials schedule depends  
on their Band and Strings needs.

	5A- Fogleman	5B- Maslowe	5C- Zaleski
Monday	PE	Art	Library-A Tech-B
Tuesday	Strings or Band	Band/Strings	Art
Wednesday	Art	STEAM- A Library- B	Band/Strings /P.E.
Thursday	Library/Tech	PE	Music
Friday	Music	Music	P.E.

# Breakfast, Lunch and Snack



## Breakfast

This year breakfast can be purchased in the cafeteria. Students will put in their lunch number before proceeding to class. If the bell has not yet rung, students will eat in the cafeteria.

## Lunch

Will be eaten in the cafeteria at class assigned tables.

If you would like to join your child for lunch, please contact your student's teacher in advance so we can let the office know. Our lunch time is from 1:00 - 1:30.

## Snack

Students will be allowed to have snack during the snack break. This is during block 1.

When choosing a snack to send, please make sure it can be eaten in 5 minutes or less as we want to maximize student's work time.

# HOW WILL THE LEARNING TIME BE STRUCTURED?

## Reading & Writing Workshop

- Whole group Focus Lessons
- Differentiated small group instruction (*minutes vary*)
  - Book Clubs or Partner Reading
  - Independent Reading & Writing
- Whole Group Reflection

## Math Workshop

- Whole group Number Sense Routine (5-10m)
- Whole group Focus Lesson (10 m.)
- Differentiated small group instruction (*minutes vary*)
  - Collaborative tasks
  - Independent Practice
- Whole Group Reflection

## Science/ Social Studies

- Content may be integrated within Math and Language Arts
- Whole Group-Discussion-based, model investigations, a focus on creative and critical thinking
- Working collaboratively (project-based learning)



# Grading and Testing



# GRADING AND REPORTING

## Balanced Assessment Approach

- Projects
- Rubrics specific to assignments
- Tests & Quizzes
- Performance Tasks

*Student understanding is assessed in multiple ways. Each assessment type provides information to guide and inform instruction to meet the needs of students.*

## Parent/Teacher Communication

- Phone Call
- Email
- Progress Update Form
- Office Hours
- Talking Points

*Teachers remain in contact with parents throughout each quarter to share and monitor student progress.*

***Conference information: A signup genius will be sent out to you from your classroom teacher!***

## Elementary Progress Report

- Achievement Grade
- Effort Grade
- Life, Work & Citizenship

*The progress report reflects the student's current level of understanding and demonstration of knowledge and skills.*

# Elementary Progress Report Marks

## 4 Consistently demonstrates concepts and skills of standard taught this quarter

- Frequency of behavior, nearly all the time
- Requires no support when demonstrating understanding
- Demonstrates a thorough understanding of content taught
- Makes no major errors or omissions when demonstrating concepts or processes taught

## 3 Usually demonstrates concepts and skills of standard taught this quarter

- Frequency of behavior, most of the time
- Requires limited support when demonstrating understanding
- Demonstrates a general understanding of content taught
- Makes few major errors or omissions when demonstrating concepts or processes

## 2 Sometimes demonstrates concepts and skills of standard taught this quarter

- Frequency of behavior, some of the time
- Requires moderate support in order to demonstrate understanding of concepts and skills
- Demonstrates a partial understanding of content taught
- Makes some errors or omissions when demonstrating concepts or processes

## 1 Seldom demonstrates concepts and skills of standard taught this quarter

- Frequency of behavior, seldom
- Requires considerable support in order to demonstrate learning of concepts and skills
- Demonstrates limited understanding of concepts, skills, and processes taught
- Makes frequent major errors when demonstrating concepts or processes



# Fall Assessment Highlights

## Quarter 1 Assessments

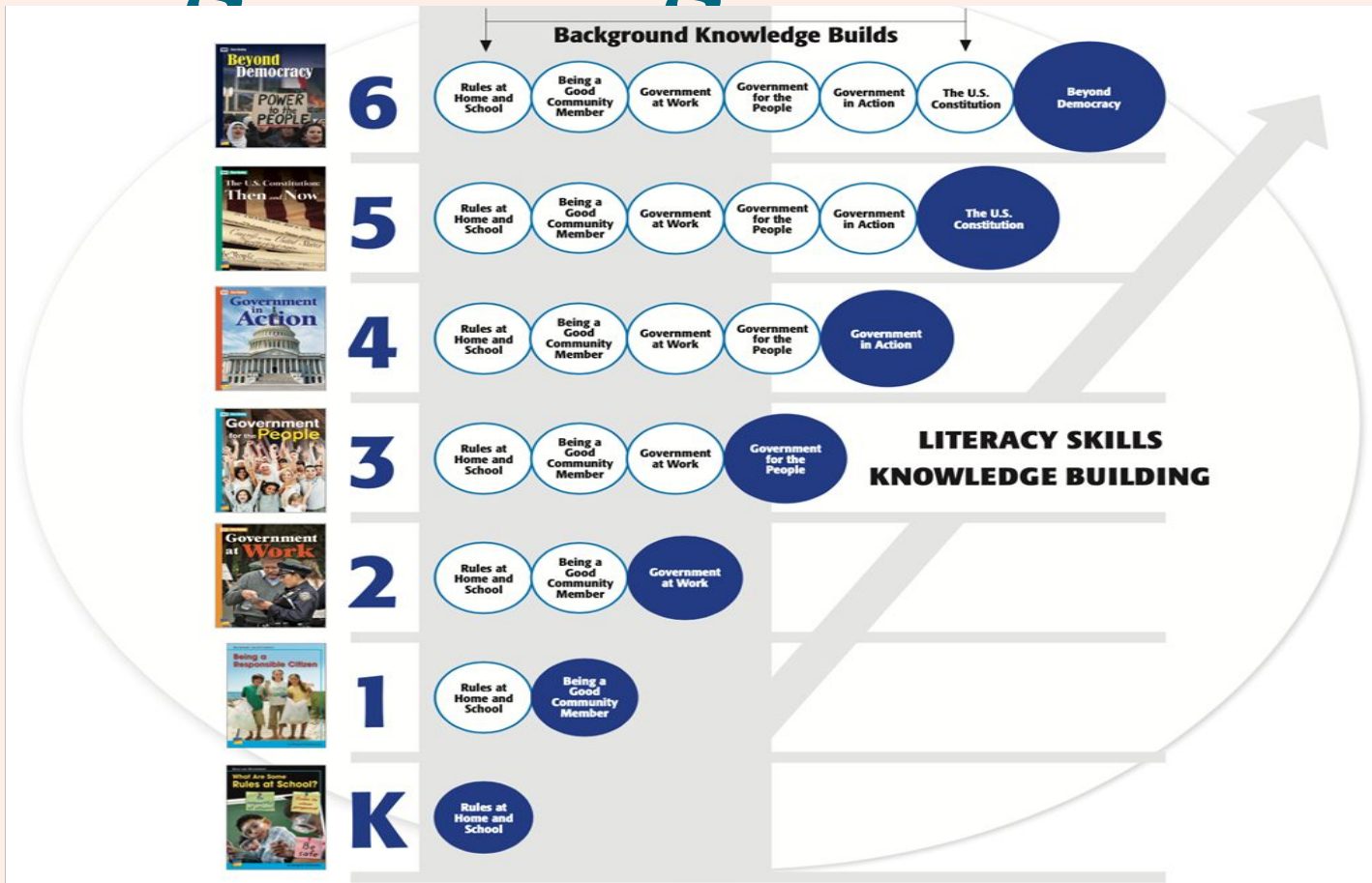
Assessment	Grade Levels	Overview
<a href="#">iReady (Universal Screener)</a>	1st-6th	Universal screening with the iReady assessment gives teachers information about strengths and needs in students' basic reading and mathematics skills.
<a href="#">SEL Screener</a>	K-6th	The screener provides information regarding students' experiences and how staff can support their needs. K-2 teacher completes survey, 3-6 student completes survey.

# Our New Curriculum for K-6



Unit	Knowledge Strand
<b>1</b>	Life Science
<b>2</b>	Character Matters
<b>3</b>	Government and Citizenship
<b>4</b>	Perspectives in Literature
<b>5</b>	Technology and Society
<b>6</b>	Themes Across Cultures
<b>7</b>	History, Culture, and Geography
<b>8</b>	Earth Science
<b>9</b>	Economics

# Growing Knowledge over Time



# Essential Questions Get More Complex

## Unit 1: Life Science

### **Plants and Animals Have Needs**

Why do living things have different needs?

Kindergarten

### **Animal Adaptations**

How do living things survive in their environment?

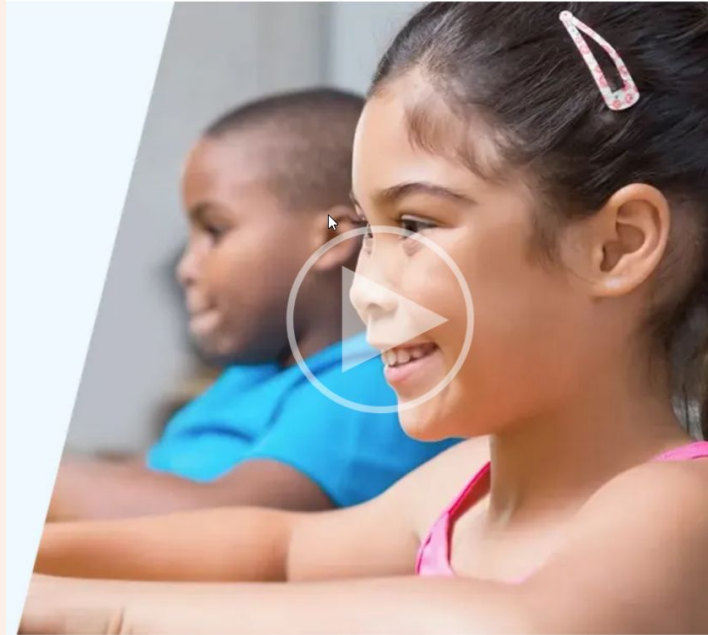
3<sup>rd</sup> Grade

### **Relationships in Nature**

What roles can we play in the balance of nature?

6<sup>th</sup> Grade

# Benchmark Caregiver Website

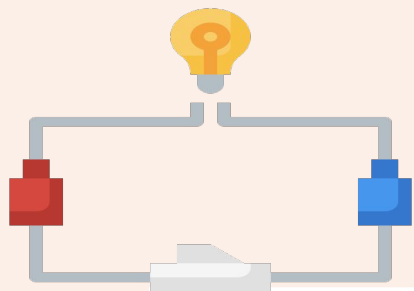


Explore the [Benchmark Caregiver Website](#) for more resources.

# Fifth Grade Mathematics Yearly Overview

	Week 1	Week 2	Week 3	Week 4	Week 5	Week 6	Week 7	Week 8	Week 9
Quarter 1	<u>Unit 1: Building Community Through the Data Cycle</u>			<u>Unit 2: Algebraic Reasoning and Characteristics of Numbers</u>			<u>Unit 3: Computation with Whole Numbers</u>		
Quarter 2	<u>Unit 3 (cont.)</u>		<u>Unit 4: Decimal and Fraction Number Sense</u>			<u>Unit 5: Computation with Decimals</u>			
Quarter 3	<u>Unit 5 (cont.)</u>	<u>Unit 6: Measurement</u>		<u>Unit 7: Fraction Computation</u>				<u>Unit 8</u>	
Quarter 4	<u>Unit 8 : Geometry and Measurement (cont.)</u>		<u>Unit 9: Data and Probability</u>				<u>SOL Review Test, Summative Assessment, Flexible Time</u>		

# Science Year at a Glance: 5th Grade



## Quarter 1

Force, motion,  
energy forms and sources

## Quarter 2

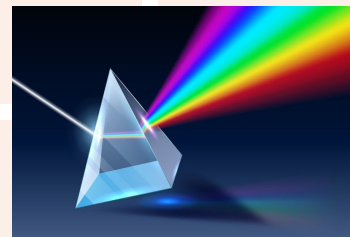
Landforms, earthquakes,  
rock properties, rock cycle

## Quarter 3

Electricity, circuits, energy  
transformation, electromagnets

## Quarter 4

Light, reflection/refraction,  
sound, instruments



# AAP

**What:** Differentiation within Math, Reading, Writing, Social Studies, and Science.  
Specifically AAP Math students will be learning the 6th grade Math curriculum

**How:** Jacob's Ladder, Socratic Seminars, Jason Learn Projects, Project M3, CCT Strategies, Project Based Learning (PBL) activities for hands on learning





All families are encouraged to attend the following Advanced Academics information sessions:

- September 25th at 6:00pm in the cafeteria to learn about all AAP Services
- October 16th at 6:00pm in the cafeteria to learn about our full-time screening process (begins in 2nd grade)

For any and all questions about AAP (Advanced Academics) please contact Alyssa Grabel, Advanced Academic Resource Teacher @ [angrabel@fcps.edu](mailto:angrabel@fcps.edu)

# Supporting Students with Social & Emotional Learning



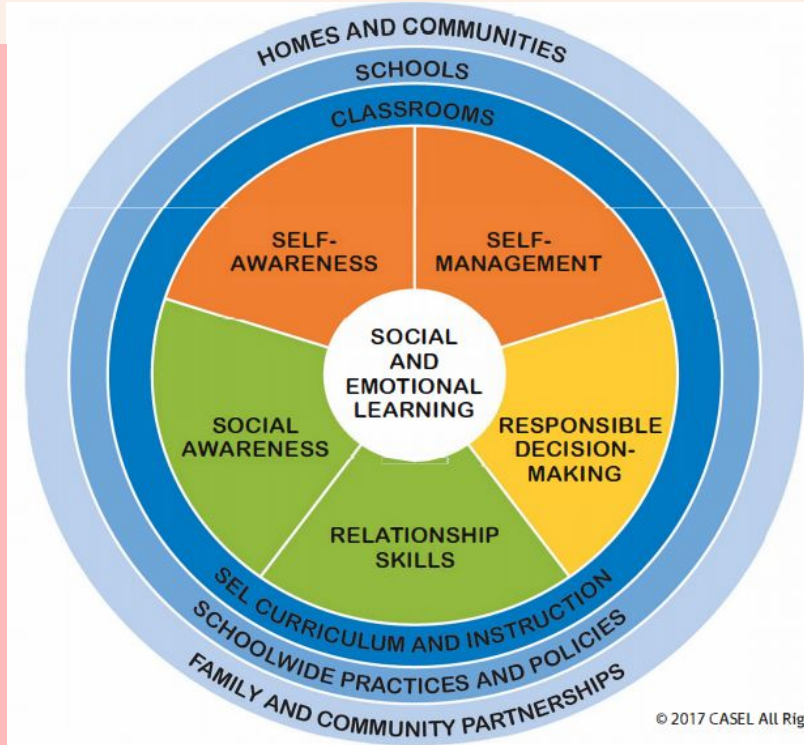
**Social Emotional Learning (SEL) is the process through which children and adults:**

- Understand and manage emotions
- Establish and maintain positive relationships
- Set and achieve positive goals
- Make responsible decisions
- Feel and show empathy

**SECOND  
STEP®**

**Second Step:**

- Engaging lessons that focus on important social, emotional skills
- Offer home practice and application opportunities





**Questions?**



## TIMBER LANE ELEMENTARY SCHOOL PTA NEEDS YOU!

# Why join the PTA?

- **Our children benefit:** Get to know your teachers, meet new classmates, and reunite with old friends.
- **You make connections:** Get to know teachers and staff, while making life-long friends with other parents in the school.
- **It's good for you:** Socializing with other parents and volunteering in your child's school is fun, healthy and rewarding.
- **The school benefits:** PTA performs to provide supports for school teachers and administration which in turn creates a positive & caring atmosphere in the school.

How To Get In Touch With Us! /  
¿Cómo ponerse en contacto  
con nosotros!



Check us out at /  
Visítanos en:

[TimberlanePTA.com](http://www.timberlanepta.com)



Follow us on Facebook /  
Síguenos en Facebook:

Timber Lane Elementary  
PTA



Email us at /  
Envíanos un email a:

[board@timberlanepa.com](mailto:board@timberlanepa.com)



**¡LA PTA DE LA ESCUELA PRIMARIA TIMBER LANE TE NECESITA!**

## ¿Por qué unirse a la PTA?

• **Nuestros niños se benefician:**

Conoce a tus profesores, conoce nuevos compañeros de clase y reencuentrate con viejos amigos.

• **Establece conexiones:**

Conozca a los maestros y al personal, mientras hace amistades para toda la vida con otros padres en la escuela.

• **Es bueno para ti:**

Socializar con otros padres y ser voluntario en la escuela de su hijo es divertido, saludable y gratificante.

• **Los beneficios de la escuela:**

La PTA brinda apoyo a los maestros y la administración de la escuela, lo que a su vez crea una atmósfera positiva y solidaria en la escuela.

How To Get In Touch With Us! /  
¡Cómo ponerse en contacto  
con nosotros!



Check us out at /  
Visítanos en:

[TimberlanePTA.com](http://www.TimberlanePTA.com)



Follow us on Facebook /  
Síguenos en Facebook:

Timber Lane Elementary  
PTA



Email us at /  
Envíanos un email a:

[board@timberlaneppta.com](mailto:board@timberlaneppta.com)

# Interested in joining the PTA? / ¿Interesados en unirse a la PTA?



It's easy to join! Visit our website to register:  
[TimberlanePTA.com](http://TimberlanePTA.com)

Or sign-up today before you leave!

Membership fee is \$15 per family / \$10 for teachers!

¡Es fácil unirse! Visite nuestro sitio web para  
registrarse: [TimberlanePTA.com](http://TimberlanePTA.com)

¡O regístrate hoy antes de irte!

¡El costo de la membresía es de \$15 por familia / \$10  
para maestros!

## PTA Upcoming Dates

- 9/10: Ice Cream Social @ 5 pm on playground
- 9/12: Restaurant Fundraiser Silver Diner (5 - 8 pm)
- 9/19: Virtual Room Parent Session @ 7:30
- 10/9: First PTA Meeting @ 7 pm in cafeteria (childcare provided)
- 10/12: Garden Cleanup - TLES from 9 - 12 pm
- 11/5: Election Day Bake sale @ TLES

**Thank you!**

